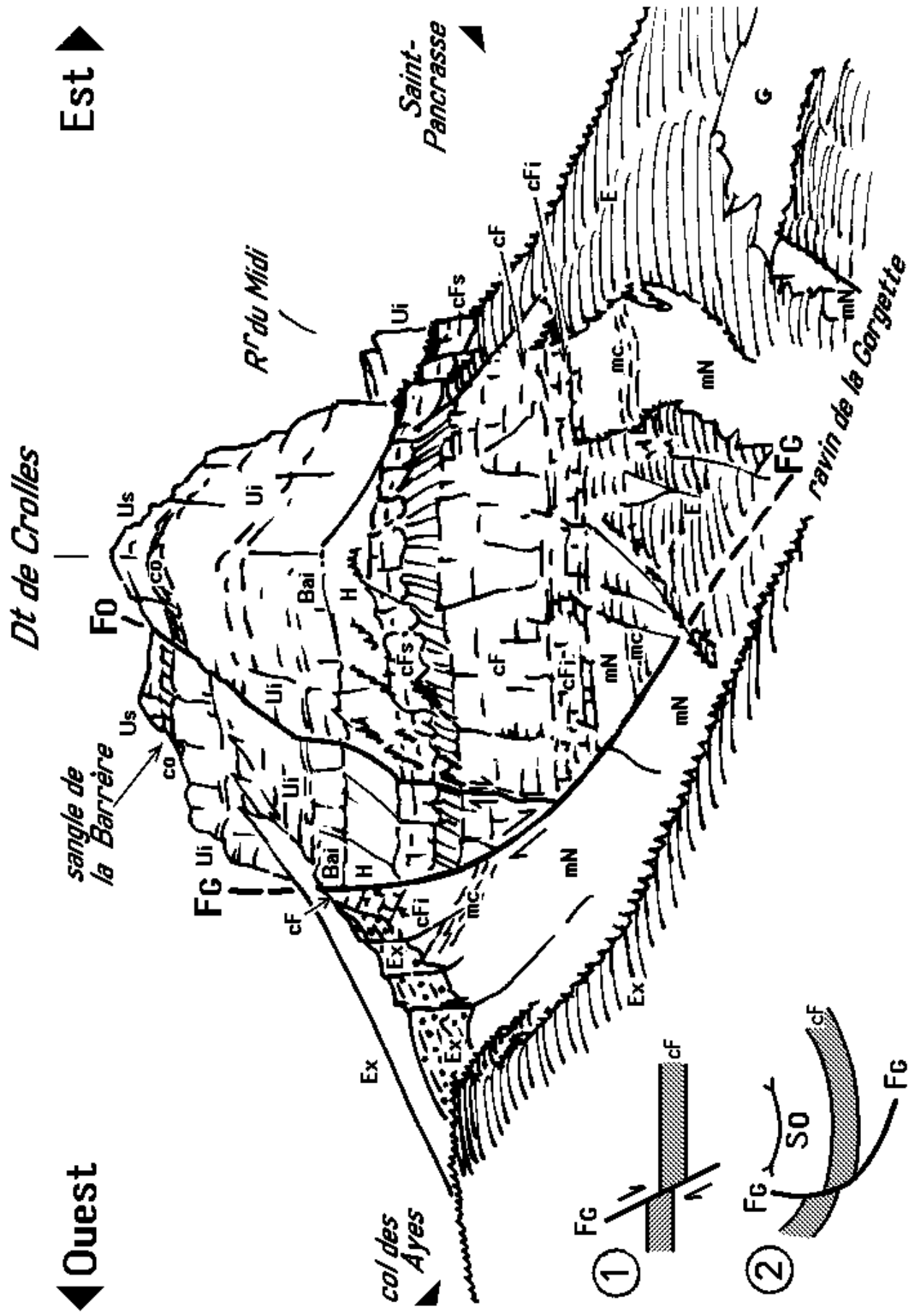


AU COL DU COQ ET AU ROC D'ARGUILLE



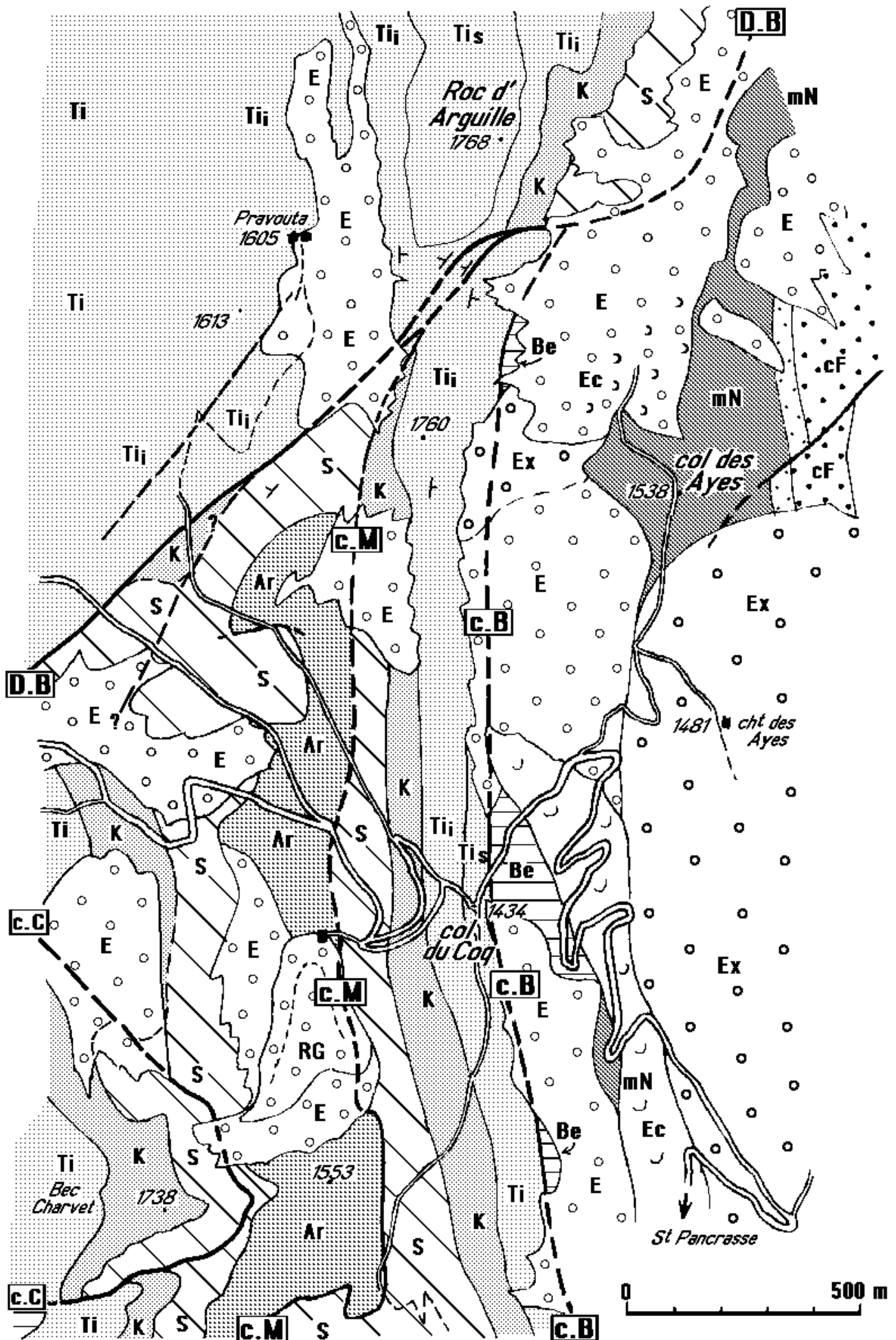
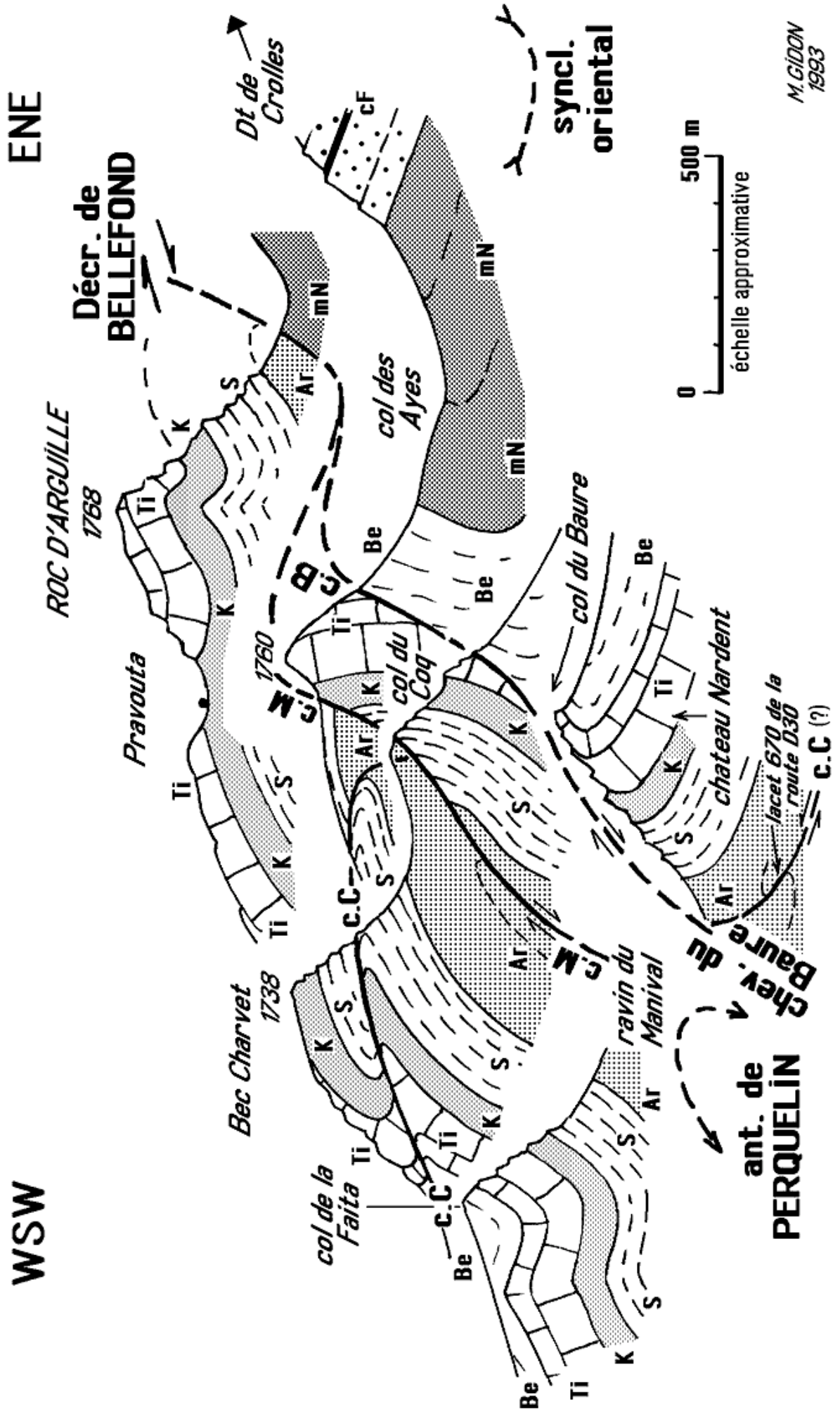
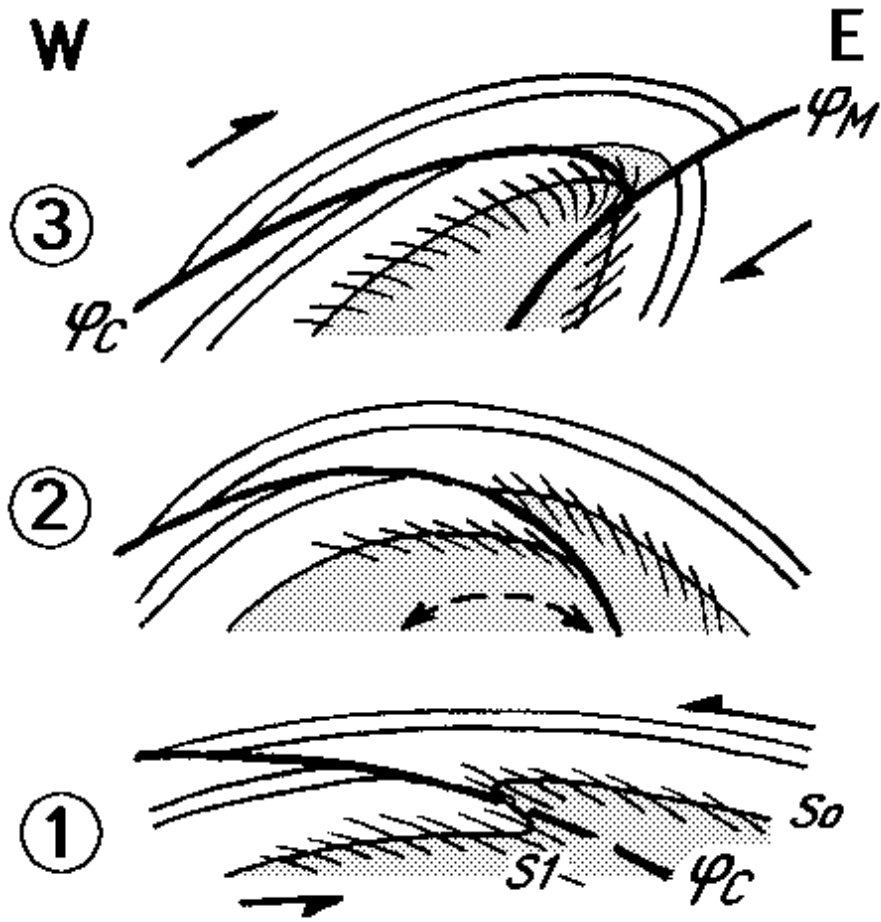
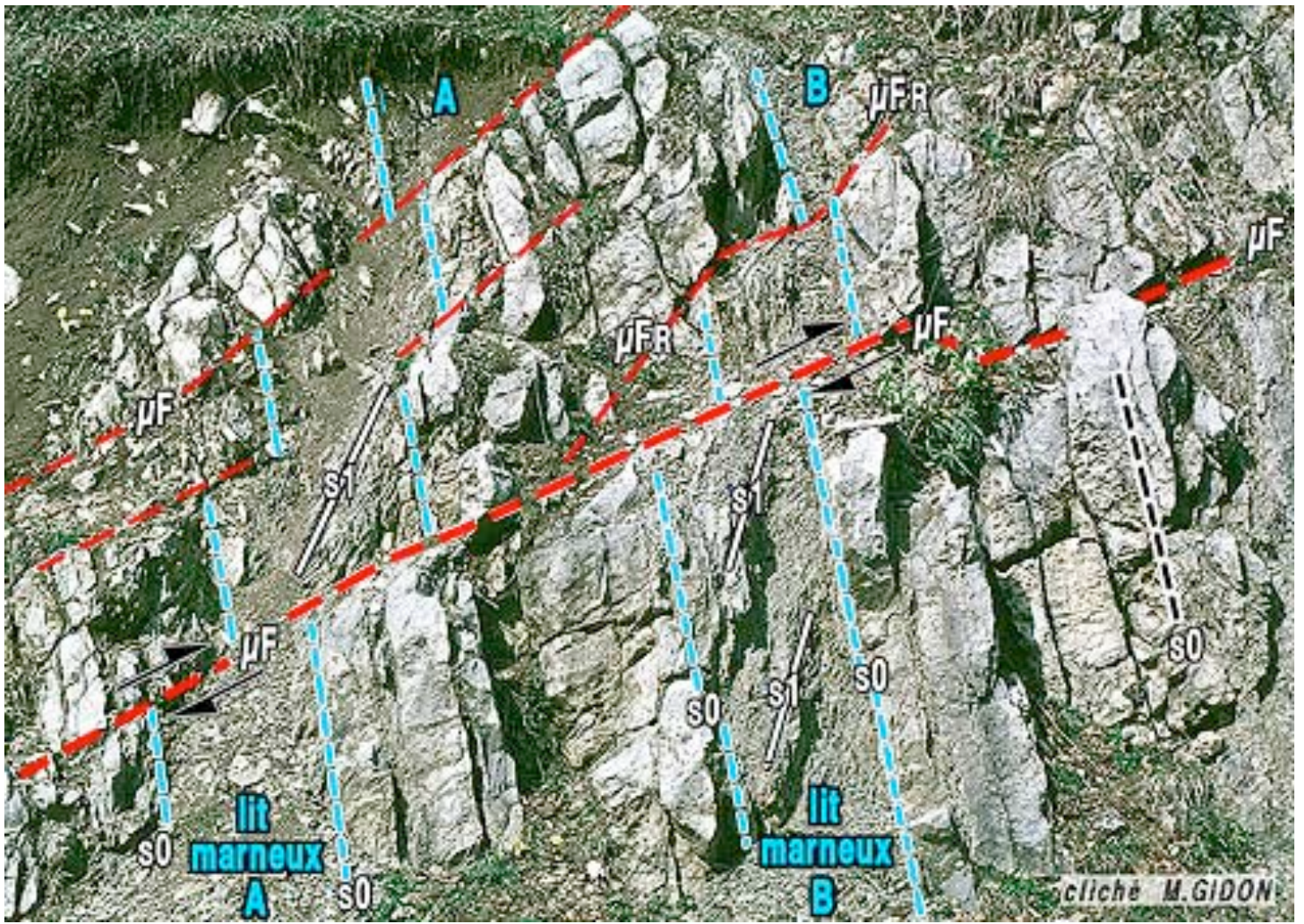
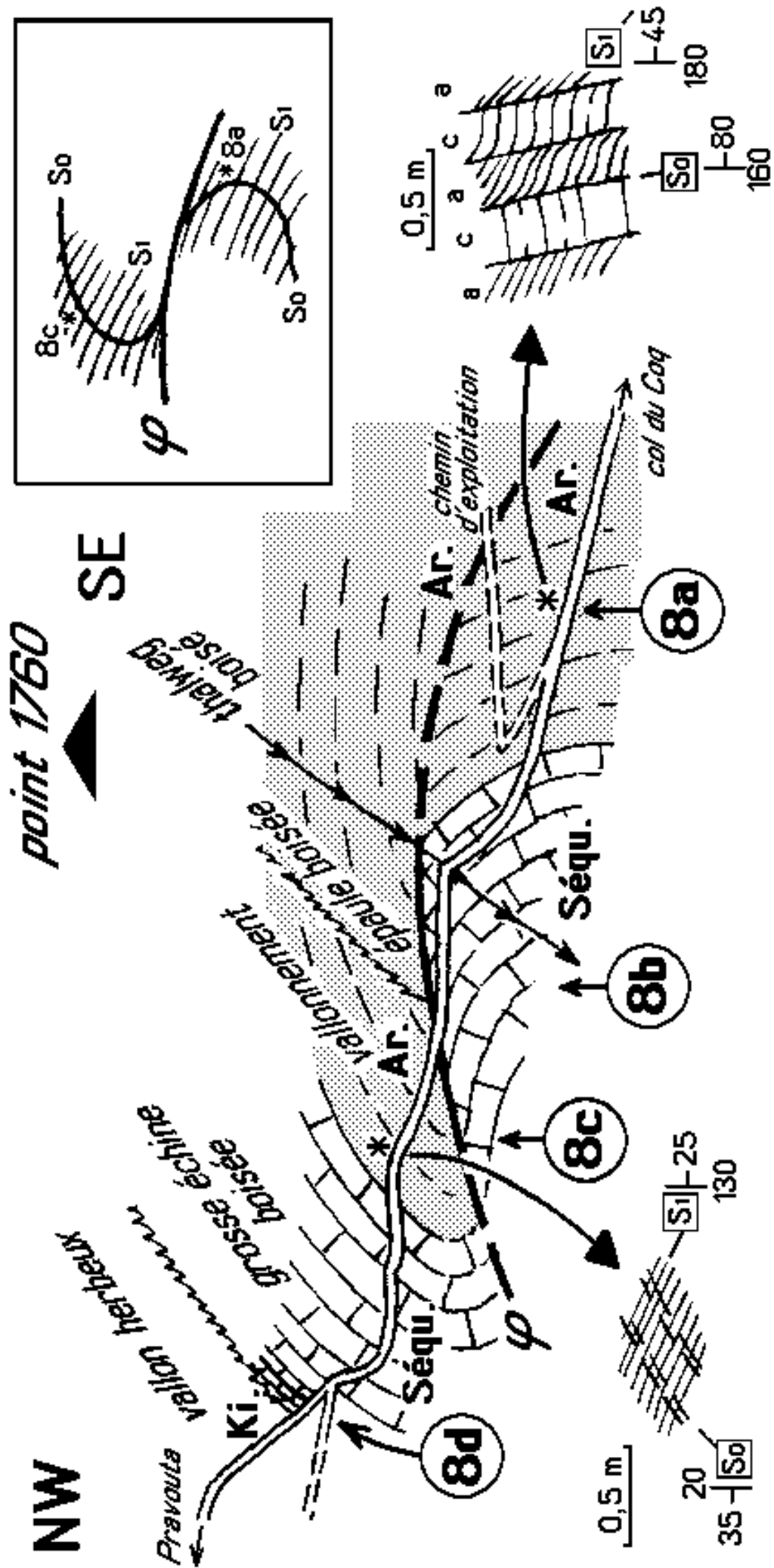


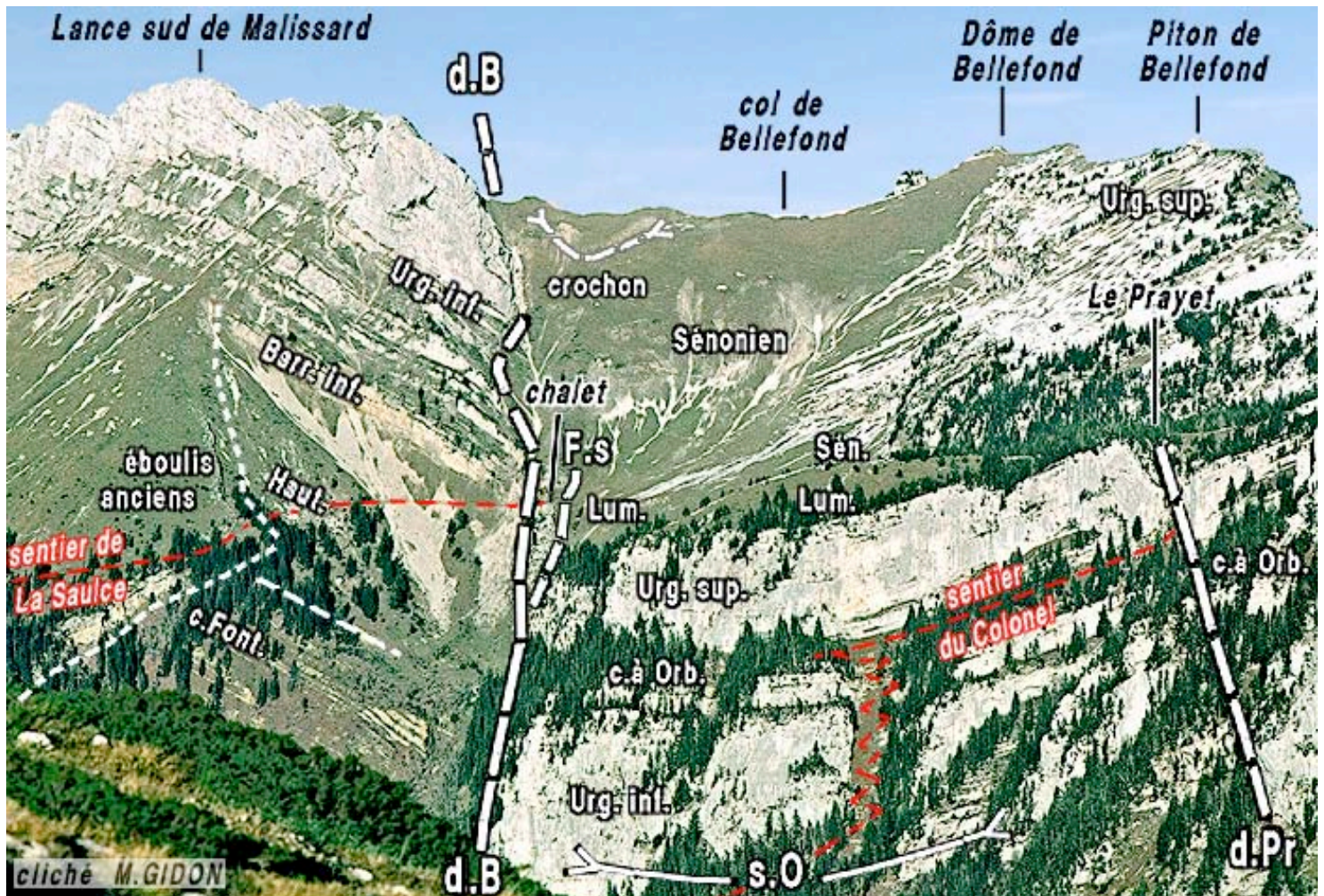
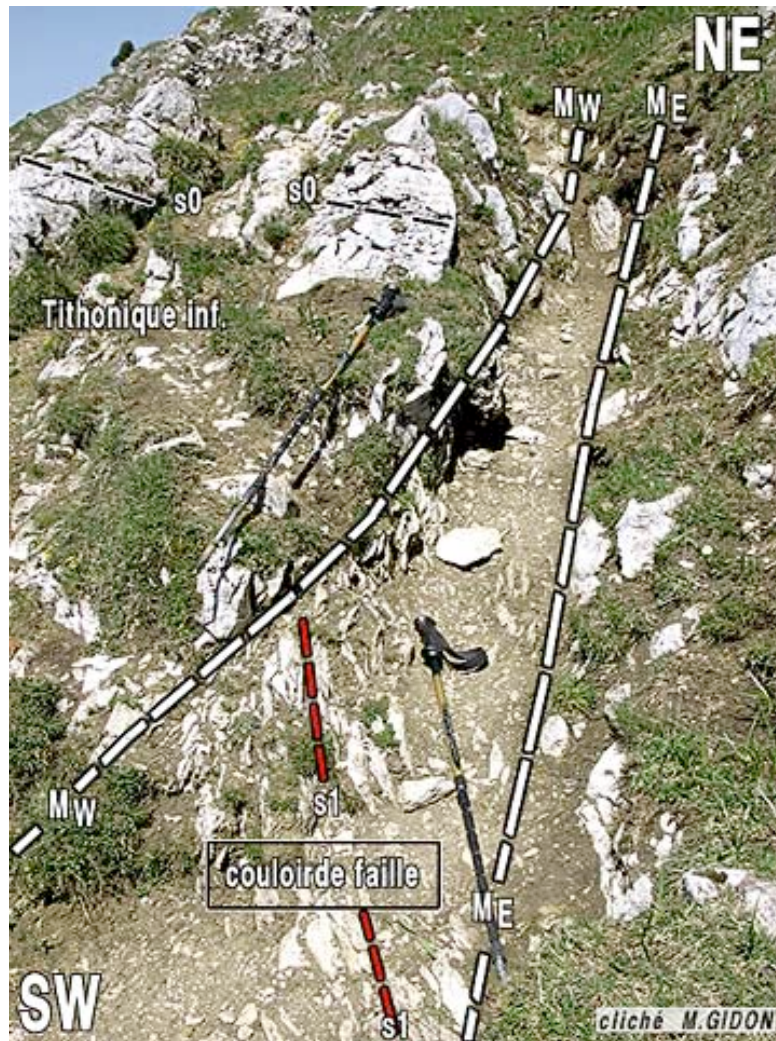
Fig. 4 - Carte détaillée du secteur du Roc d'Arguille.

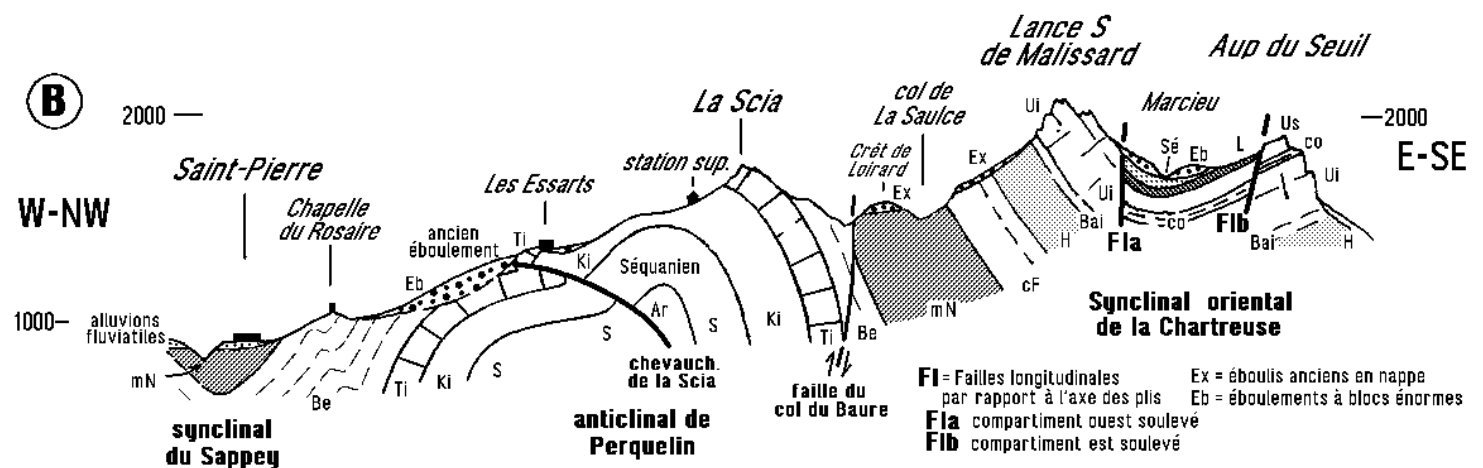
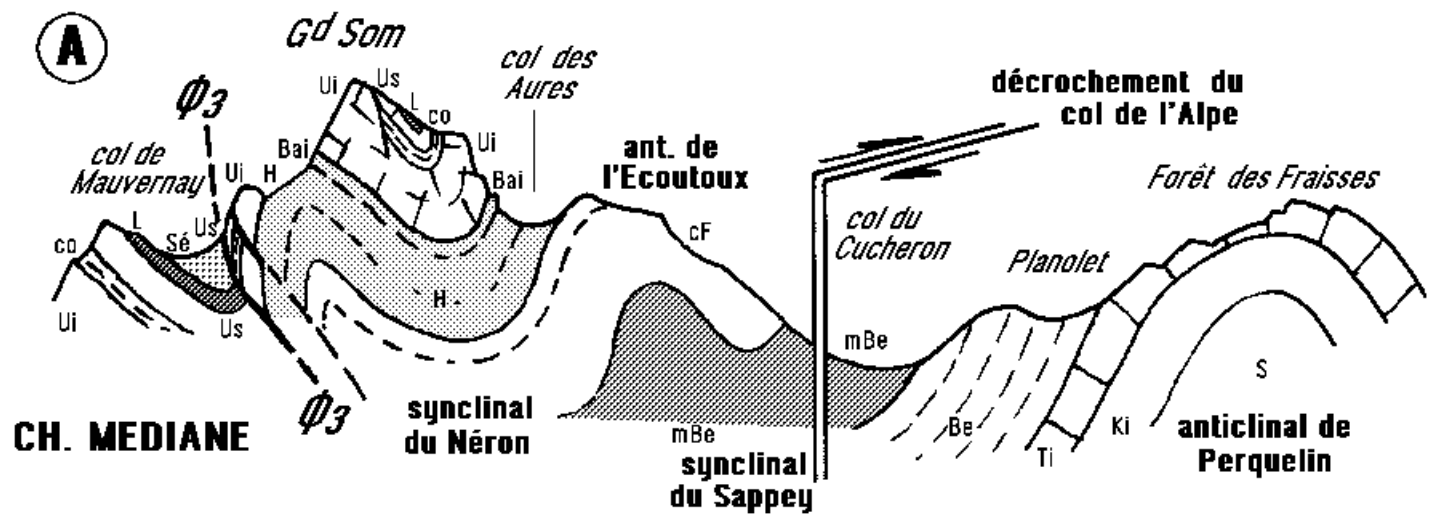
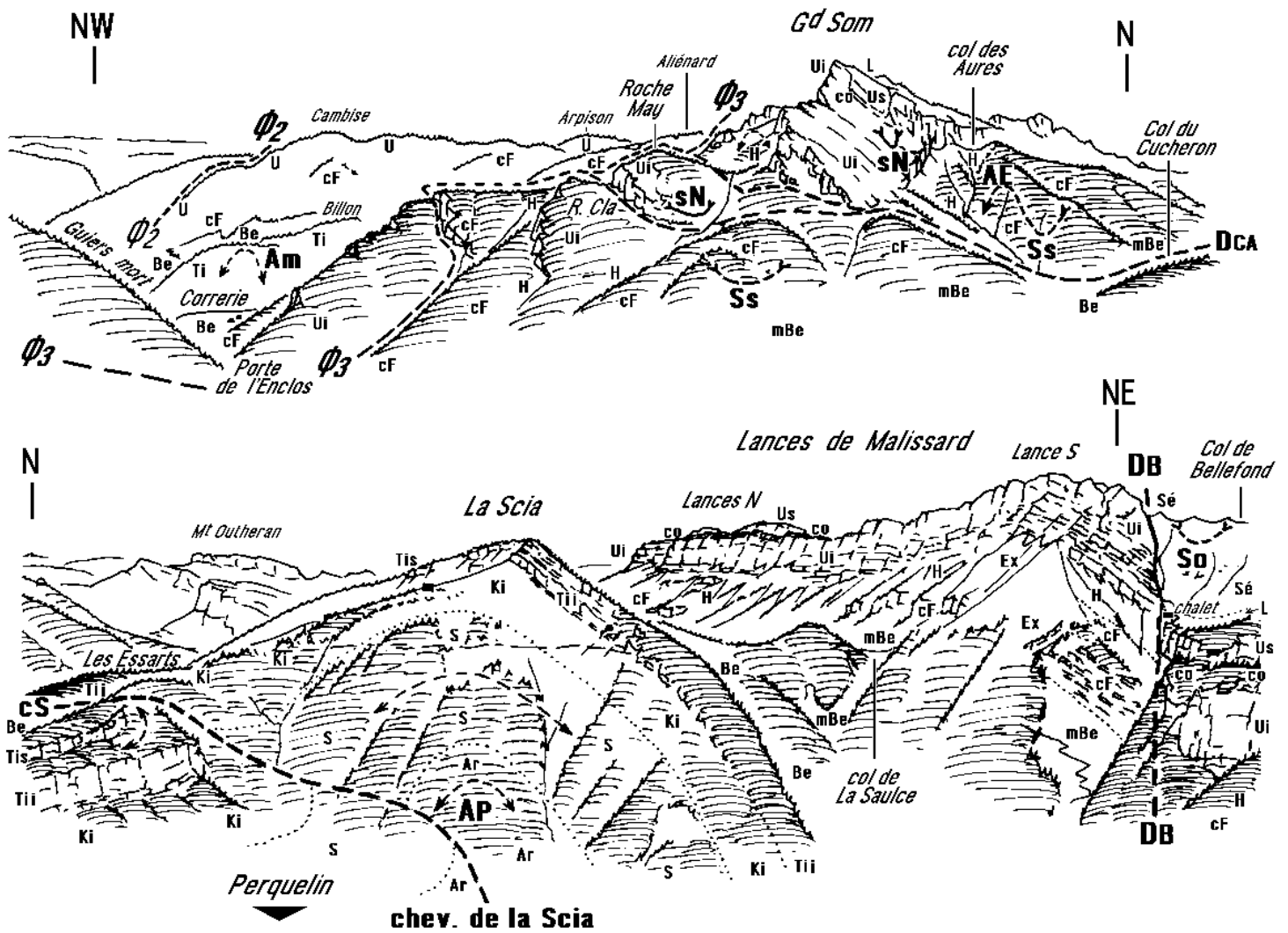
D.B = décrochement de Bellefond ; c.M = chevauchement du Manival ; c.B = chevauchement du Baure ;
 c.C = chevauchement du Bec Charvet.











Fl = Failles longitudinales par rapport à l'axe des plis
Fla = compartiment ouest soulevé
Fib = compartiment est soulevé
Ex = éboulis anciens en nappe
Eb = éboulements à blocs énormes